



# Medgel



SILIMED 

14

01/2010



**PT**

**Medgel**

Silicone gel para tratamento ou prevenção de cicatrizes hipertróficas.

Fornecido não estéril.

**ES**

**Medgel**

Silicona gel para tratamento o prevención de cicatrices hipertróficas.

Se entrega no estéril.

**EN**

**Medgel**

Silicone gel for treatment or prevention of hypertrophic scars.

Supplied non-sterile.

**FR**

**Medgel**

Silicone gel pour le traitement ou la prévention de cicatrices hypertrophiques.

Fourni non stérile.

**IT**

**Medgel**

Silicone gel per trattamento o prevenzione di cicatrici ipertrofiche.

Fornito non sterile.

**DE**

**Medgel**

Silikongel für die Behandlung oder Vorbeugung der Hypertrophische Narben.

Wird nicht steril geliefert.

**NL**

**Medgel**

Siliconengel voor de behandeling of preventie van hypertrofe littekens.

Niet steriel geleverd.

**TR**

**Medgel**

Hipertrofik sikatrislerin tedavisinde veya önlemekte kullanılan silikon jeldir.

Sterilize edilmemiş olarak sunulur.

**EL**

**Medgel**

Ζελέ σιλικόνης για τη θεραπεία ή πρόληψη υπερτροφικών επούλωσεων.

Παρέχεται αποστειρωμένο.

**14A**

01/2010



## Медицинский гель

RU

Силиконовый гель для лечения или профилактики гипертрофических шрамов.  
Поставляется не стерильным.

## Medgel

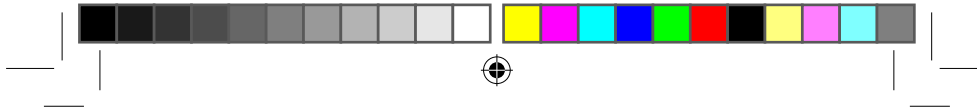
SK

Silikonový gel na liečenie alebo zamedzenia hypertrofických jaziev.  
Dodáva sa nesterilný.



01/2010

14B



**Placa**  
 Placa  
**Plate**  
 Plaque  
**Placca**  
 Blatt  
**Plaat**  
 Plaka  
 Πλάκα  
 Пластина  
**Doska**

| REF        | K X  |      | QTD |
|------------|------|------|-----|
|            | cm   |      |     |
|            | A    | B    |     |
| 1240-010I1 | 10,0 | 10,0 | 1   |
| 1240-010H  | 10,0 | 10,0 | 6   |



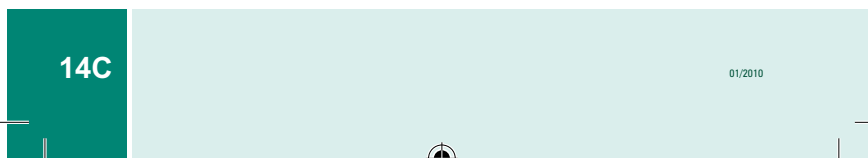
**Tira**  
 Tira  
**Strip**  
 Bande  
**Striscia**  
 Band  
**Strook**  
 Şerit  
**Λουρίδα**  
 Лента  
**Pruh**

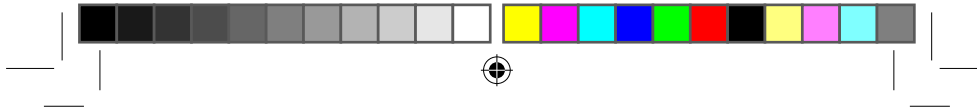

| REF        | K X  |     | QTD |
|------------|------|-----|-----|
|            | cm   |     |     |
|            | A    | B   |     |
| 1240-011I1 | 30,0 | 2,0 | 1   |
| 1240-011I2 | 30,0 | 2,0 | 2   |
| 1240-011H  | 30,0 | 2,0 | 12  |



**Tira**  
 Tira  
**Strip**  
 Bande  
**Striscia**  
 Band  
**Strook**  
 Şerit  
**Λουρίδα**  
 Лента  
**Pruh**


| REF        | K X  |     | QTD |
|------------|------|-----|-----|
|            | cm   |     |     |
|            | A    | B   |     |
| 1240-016I1 | 10,0 | 5,0 | 1   |



| REF        | cm  |     | QTD |
|------------|-----|-----|-----|
|            | A   | B   |     |
| 1240-012I2 | 7,0 | 2,0 | 2   |
| 1240-012H  | 7,0 | 2,0 | 12  |

Disco  
Disco  
Disk  
Disque  
Disco  
Scheibe  
Schiff  
Disk  
Δίσκος  
Диск  
Disk

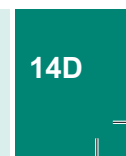
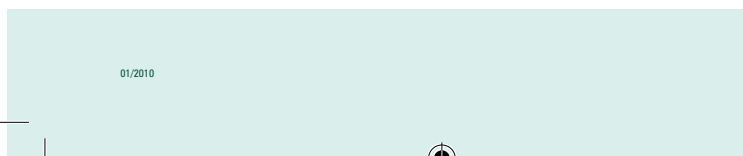
| REF        | cm   |     | QTD |
|------------|------|-----|-----|
|            | A    | B   |     |
| 1240-013I2 | 34,0 | 9,5 | 2   |

"T" Invertido  
"T" Invertido  
Inverted "T"  
"T" inversé  
"T" Capovolto  
Umgedrehtes "T"  
Omgekeerde "T"  
Çevrilmiş "T"  
"T" Αντίστροφο  
Перевернутый "T"-  
образный формат  
Obrátené "T"




| REF      | g  | QTD |
|----------|----|-----|
| 1230-015 | 15 | 1   |

Gel  
Gel  
Gel  
Gel  
Gel  
Gel  
Jel  
Ζελέ  
Гель  
Gel



01/2010

14D