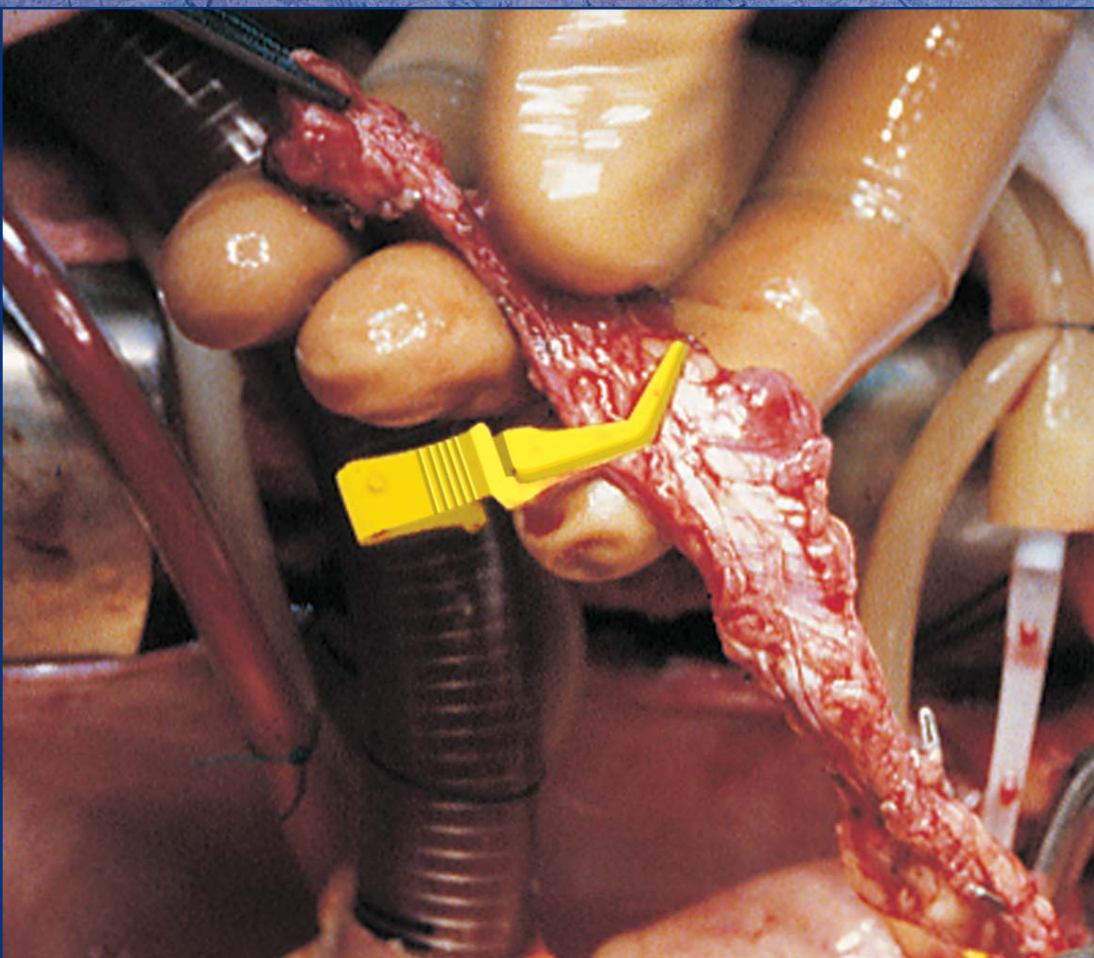


Vascu-Stat[®]

single-use bulldog clamp system



INTERNATIONAL

Surgical products designed and manufactured by the Scanlan family since 1921

SCANLAN® Vascu-Statt® single-use bulldog clamps

*Offering surgeons a lightweight,
atraumatic alternative to
conventional metal bulldog clamps*

Vascu-Statt® single-use bulldog clamps are a lightweight, cost-effective alternative to metal bulldog clamps.

Unlike metal bulldog clamps (whose clamping pressure changes with use), Vascu-Statt® single-use bulldog clamps offer a unique, preset tension, ensuring consistent clamping pressure with each use.

The entire line of Vascu-Statt® single-use bulldog clamps feature...

- A choice of straight or angled jaws
- Lightweight, cost-effective, radiopaque plastic construction
- A wide range of preset, consistent clamping pressures
- Color-coded by clamp size and pressure
- Single-use, sterile packaged
- Atraumatic jaw designs
- Four sizes to choose from
- May be applied by hand or with the specially designed Vascu-Statt® applicators
- Latex-Safe
- Parallel clamp designed for maximum occlusion and atraumatic pressure



ORIGINAL

Vascu-Statt® original single-use bulldog clamps

Three color-coded sizes, available with straight or angled jaws.

- **Red** (mini, clamping pressure 10-15 grams)
- **White** (midi, clamping pressure 25-30 grams)
- **Blue** (maxi, clamping pressure 50-60 grams)

Vascu-Statt® II original single-use bulldog clamps

Twice the clamping pressure of Vascu-Statt® original.

Three color-coded sizes, available with straight or angled jaws.

- **Green** (mini, clamping pressure 20-25 grams)
- **Yellow** (midi, clamping pressure 75-80 grams)
- **Orange** (maxi, clamping pressure 165-175 grams)

Vascu-Statt® original approximator single-use bulldog clamps

Used to facilitate end-to-end anastomosis.

Three color-coded sizes, available with straight or angled jaws.

- **Red** (mini, clamping pressure 10-15 grams)
- **White** (midi, clamping pressure 25-30 grams)
- **Blue** (maxi, clamping pressure 50-60 grams)

Vascu-Statt® II original approximator single-use bulldog clamps

Twice the clamping pressure of Vascu-Statt original.

Used to facilitate end-to-end anastomosis.

Three color-coded sizes, available with straight or angled jaws.

- **Green** (mini, clamping pressure 20-25 grams)
- **Yellow** (midi, clamping pressure 75-80 grams)
- **Orange** (maxi, clamping pressure 165-175 grams)



PLUS

Vascu-Statt® PLUS single-use bulldog clamps offer the same benefits as the Vascu-Statt® original clamps, but also feature a cushioned Gentle-Jaw™ surface that absorbs and softens as it provides gentle occlusion without increased trauma to the vessel wall.

Vascu-Statt® PLUS single-use bulldog clamps with Gentle-Jaw™ surface

Three color-coded sizes, available with straight or angled jaws.

- **Red** (mini, clamping pressure 10-15 grams)
- **White** (midi, clamping pressure 25-30 grams)
- **Blue** (maxi, clamping pressure 50-60 grams)

Vascu-Statt® II PLUS single-use bulldog clamps with Gentle-Jaw™ surface

Twice the clamping pressure of Vascu-Statt® PLUS.

Three color-coded sizes, available with straight or angled jaws.

- **Green** (mini, clamping pressure 20-25 grams)
- **Yellow** (midi, clamping pressure 75-80 grams)
- **Orange** (maxi, clamping pressure 165-175 grams)

Vascu-Statt® PLUS approximator single-use bulldog clamps with Gentle-Jaw™ surface

Used to facilitate end-to-end anastomosis.

Three color-coded sizes, available with straight or angled jaws.

- **Red** (mini, clamping pressure 10-15 grams)
- **White** (midi, clamping pressure 25-30 grams)
- **Blue** (maxi, clamping pressure 50-60 grams)

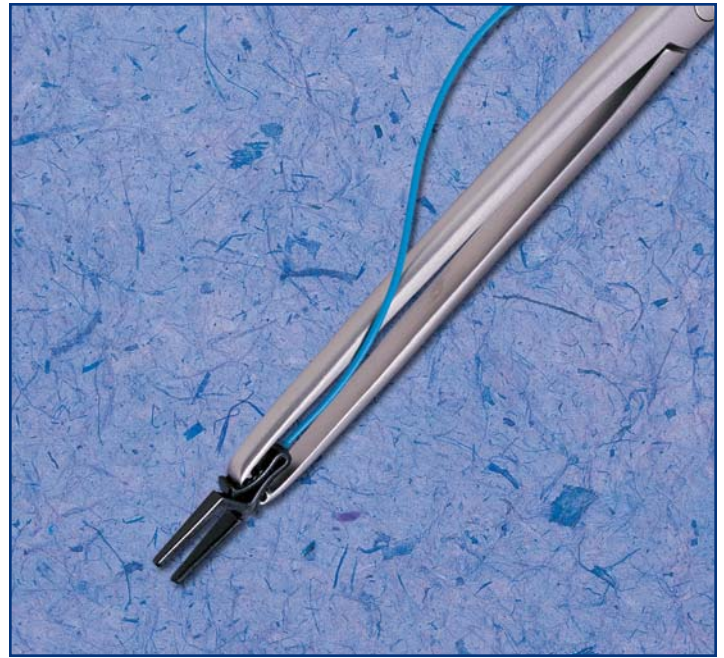
Vascu-Statt® II PLUS approximator single-use bulldog clamps with Gentle-Jaw™ surface

Twice the clamping pressure of Vascu-Statt® PLUS.

Used to facilitate end-to-end anastomosis.

Three color-coded sizes, available with straight or angled jaws.

- **Green** (mini, clamping pressure 20-25 grams)
- **Yellow** (midi, clamping pressure 75-80 grams)
- **Orange** (maxi, clamping pressure 165-175 grams)



MICRO

Recent additions to the extensive line of SCANLAN® Vascu-Statt® single-use bulldog clamps, Micro Vascu-Statt® clamps offer even smaller clamps sizes, preferred for use in peripheral, micro, vascular, and neurosurgery, as well as in many types of plastic and hand surgery.

In addition to providing the same features as the rest of the Vascu-Statt line, the SCANLAN® Micro Vascu-Statt® single-use bulldog clamps also offer...

- A radiopaque tag line for safe and easy visualization within the operating field
- Micro-Sure™ non-slip jaws for less traumatic occlusion
- Straight, streamline jaws
- Two preset, consistent clamping pressures
- May be applied by hand or with the specially designed Micro Vascu-Statt® applier

Micro Vascu-Statt® single use bulldog clamps

One color-coded size, available with straight jaws.

- **Purple** (micro, clamping pressure 15-20 grams)

Micro Vascu-Statt® II single-use bulldog clamps

Twice the clamping pressure of Micro Vascu-Statt® original.

One color-coded size, available with straight jaws.

- **Black** (micro, clamping pressure 30-40 grams)

Vascu-Statt® APPLIERS

Vascu-Statt® applicators are designed to be used exclusively with Vascu-Statt® single-use bulldog clamps. They are a convenient, easy way to apply Vascu-Statt® single-use bulldog clamps — especially in deep, hard to reach surgical fields.

Vascu-Statt® applicators

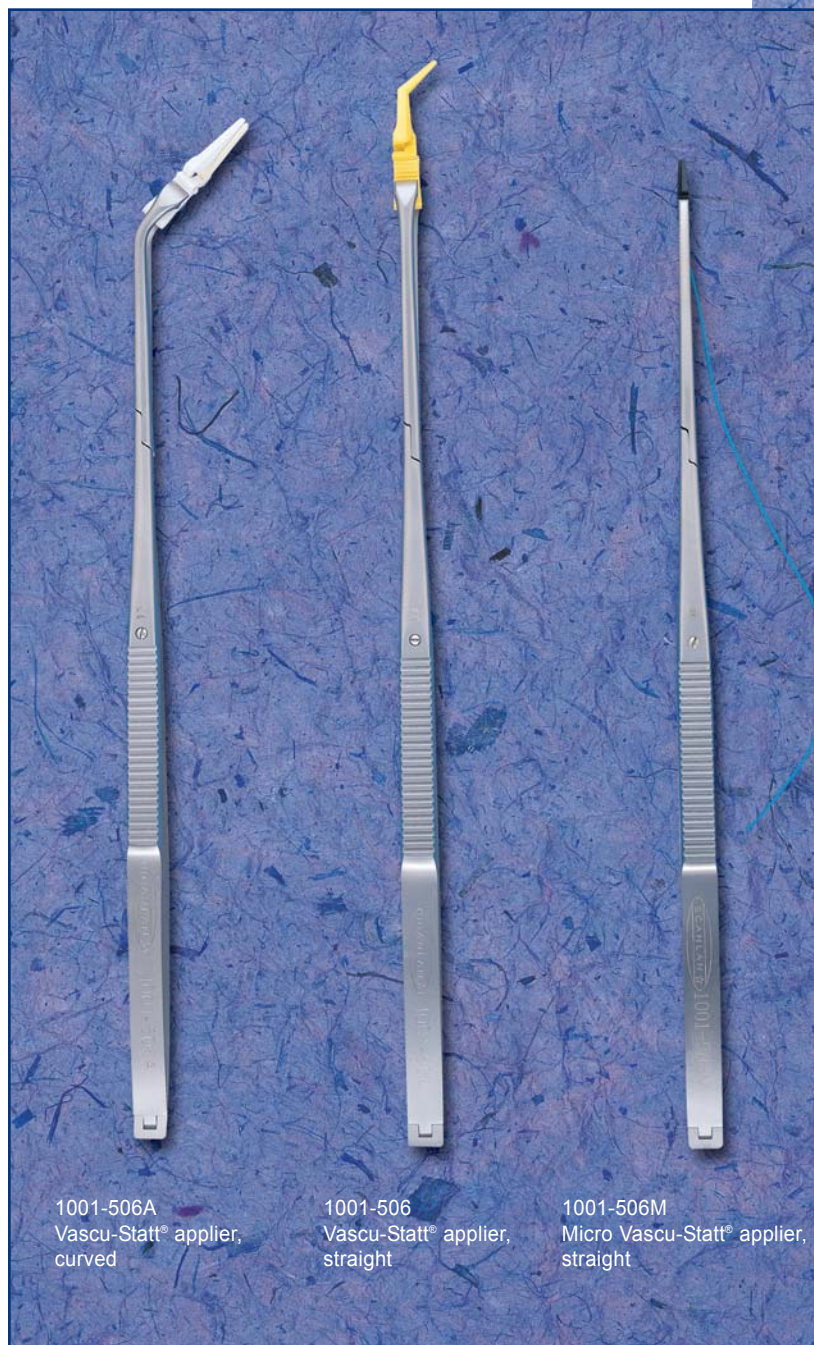
1001-506 Vascu-Statt® applicator, straight, 8½" / 21.5 cm

1001-506A Vascu-Statt® applicator, curved, 8½" / 21.5 cm

1001-506M Micro Vascu-Statt® applicator, straight, 8¼" / 21 cm

9009-506 CardioVasive™ Vascu-Statt® applicator, straight, (18 cm working length) 15½" / 39.4 cm

9009-506A CardioVasive™ Vascu-Statt® applicator, curved, (18 cm working length) 15½" / 39.4 cm



1001-506A
Vascu-Statt® applicator,
curved

1001-506
Vascu-Statt® applicator,
straight

1001-506M
Micro Vascu-Statt® applicator,
straight



9009-506A
CardioVasive™
Vascu-Statt® applicator,
curved

9009-506
CardioVasive™
Vascu-Statt® applicator,
straight

Micro Vascu-Statt®, Vascu-Statt® original, and Vascu-Statt® PLUS single-use bulldog clamps

Two each per sterile package • Five packages per box
All products are shown at actual size



Micro Vascu-Statt®
1001-499 Straight, micro (purple)
clamping pressure 15-20 grams

Vascu-Statt® original
1001-502 Straight, mini (red)
clamping pressure 10-15 grams



Vascu-Statt® PLUS with Gentle-Jaw™ surface
1001-552 Straight, mini (red)
clamping pressure 10-15 grams

Vascu-Statt® original
1001-503 Angled 45°, mini (red)
clamping pressure 10-15 grams



Vascu-Statt® PLUS with Gentle-Jaw™ surface
1001-553 Angled 45°, mini (red)
clamping pressure 10-15 grams

Vascu-Statt® original
1001-500 Straight, midi (white)
clamping pressure 25-30 grams



Vascu-Statt® PLUS with Gentle-Jaw™ surface
1001-550 Straight, midi (white)
clamping pressure 25-30 grams

Vascu-Statt® original
1001-501 Angled 45°, midi (white)
clamping pressure 25-30 grams

Vascu-Statt® PLUS with Gentle-Jaw™ surface
1001-551 Angled 45°, midi (white)
clamping pressure 25-30 grams

Vascu-Statt® original
1001-504 Straight, maxi (blue)
clamping pressure 50-60 grams



Vascu-Statt® PLUS with Gentle-Jaw™ surface
1001-554 Straight, maxi (blue)
clamping pressure 50-60 grams

Vascu-Statt® original
1001-505 Angled 45°, maxi (blue)
clamping pressure 50-60 grams

Vascu-Statt® PLUS with Gentle-Jaw™ surface
1001-555 Angled 45°, maxi (blue)
clamping pressure 50-60 grams

Micro Vascu-Statt® II, Vascu-Statt® II original, and Vascu-Statt® II PLUS single-use bulldog clamps

Two each per sterile package • Five packages per box
All products are shown at actual size



Micro Vascu-Statt® II
1001-529 Straight, micro (black)
clamping pressure 30-40 grams

Vascu-Statt® II original
1001-530 Straight, mini (green)
clamping pressure 20-25 grams



Vascu-Statt® II PLUS with Gentle-Jaw™ surface
1001-570 Straight, mini (green)
clamping pressure 20-25 grams

Vascu-Statt® II original
1001-531 Angled 45°, mini (green)
clamping pressure 20-25 grams



Vascu-Statt® II PLUS with Gentle-Jaw™ surface
1001-571 Angled 45°, mini (green)
clamping pressure 20-25 grams

Vascu-Statt® II original
1001-532 Straight, midi (yellow)
clamping pressure 75-80 grams



Vascu-Statt® II PLUS with Gentle-Jaw™ surface
1001-572 Straight, midi (yellow)
clamping pressure 75-80 grams

Vascu-Statt® II original
1001-533 Angled 45°, midi (yellow)
clamping pressure 75-80 grams

Vascu-Statt® II PLUS with Gentle-Jaw™ surface
1001-573 Angled 45°, midi (yellow)
clamping pressure 75-80 grams

Vascu-Statt® II original
1001-534 Straight, maxi (orange)
clamping pressure 165-175 grams



Vascu-Statt® II PLUS with Gentle-Jaw™ surface
1001-574 Straight, maxi (orange)
clamping pressure 165-175 grams

Vascu-Statt® II original
1001-535 Angled 45°, maxi (orange)
clamping pressure 165-175 grams

Vascu-Statt® II PLUS with Gentle-Jaw™ surface
1001-575 Angled 45°, maxi (orange)
clamping pressure 165-175 grams

SCANLAN ★

INTERNATIONAL

Surgical products designed and manufactured by the Scanlan family since 1921

For more information or to place an order,
please contact your local Scanlan representative, or call...
U.S.A. & Canada: 800-328-9458 • International: 651-298-0997
FAX: 651-298-0018 • www.scanlanguroup.com

Vascu-Statt® original approximator and Vascu-Statt® PLUS approximator single-use bulldog clamps

One each per sterile package • Five packages per box
All products are shown at actual size



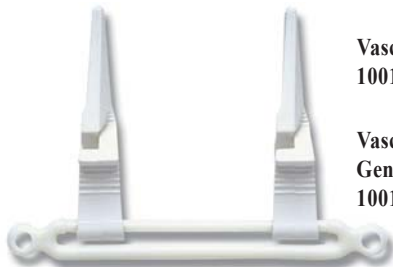
Vascu-Statt® original approximator
1001-507 Straight, mini (red)
clamping pressure 10-15 grams

Vascu-Statt® PLUS approximator with Gentle-Jaw™ surface
1001-560 Straight, mini (red)
clamping pressure 10-15 grams



Vascu-Statt® original approximator
1001-508 Angled 45°, mini (red)
clamping pressure 10-15 grams

Vascu-Statt® PLUS approximator with Gentle-Jaw™ surface
1001-561 Angled 45°, mini (red)
clamping pressure 10-15 grams



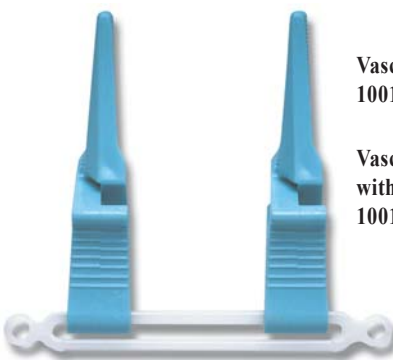
Vascu-Statt® original approximator
1001-509 Straight, midi (white)
clamping pressure 25-30 grams

Vascu-Statt® PLUS approximator with Gentle-Jaw™ surface
1001-562 Straight, midi (white)
clamping pressure 25-30 grams



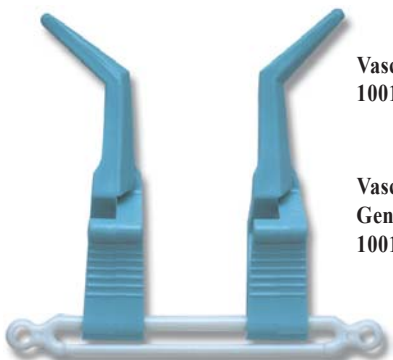
Vascu-Statt® original approximator
1001-510 Angled 45°, midi (white)
clamping pressure 25-30 grams

Vascu-Statt® PLUS approximator with Gentle-Jaw™ surface
1001-563 Angled 45°, midi (white)
clamping pressure 25-30 grams



Vascu-Statt® original approximator
1001-511 Straight, maxi (blue)
clamping pressure 50-60 grams

Vascu-Statt® PLUS approximator PLUS with Gentle-Jaw™ surface
1001-564 Straight, maxi (blue)
clamping pressure 50-60 grams



Vascu-Statt® original approximator
1001-512 Angled 45°, maxi (blue)
clamping pressure 50-60 grams

Vascu-Statt® PLUS approximator with Gentle-Jaw™ surface
1001-565 Angled 45°, maxi (blue)
clamping pressure 50-60 grams

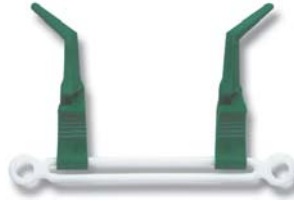
Vascu-Statt II® approximator and Vascu-Statt II® PLUS approximator single-use bulldog clamps

One each per sterile package • Five packages per box
All products are shown at actual size



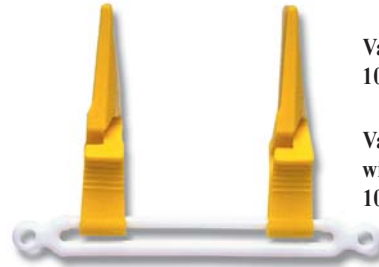
Vascu-Statt® II original approximator
1001-540 Straight, mini (green)
clamping pressure 20-25 grams

Vascu-Statt® II PLUS approximator with Gentle-Jaw™ surface
1001-580 Straight, mini (green)
clamping pressure 20-25 grams



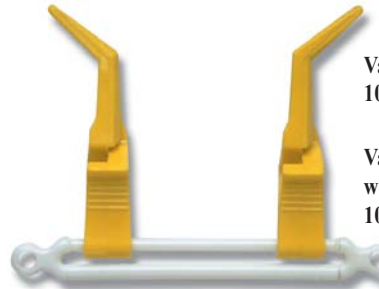
Vascu-Statt® II original approximator
1001-541 Angled 45°, mini (green)
clamping pressure 20-25 grams

Vascu-Statt® II PLUS approximator with Gentle-Jaw™ surface
1001-581 Angled 45°, mini (green)
clamping pressure 20-25 grams



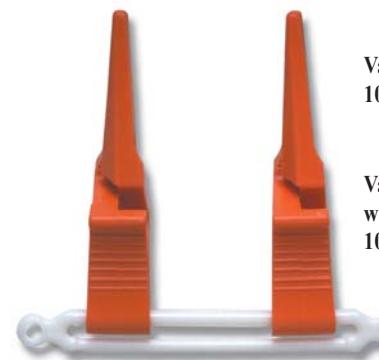
Vascu-Statt® II original approximator
1001-542 Straight, midi (yellow)
clamping pressure 75-80 grams

Vascu-Statt® II PLUS approximator with Gentle-Jaw™ surface
1001-582 Straight, midi (yellow)
clamping pressure 75-80 grams



Vascu-Statt® II original approximator
1001-543 Angled 45°, midi (yellow)
clamping pressure 75-80 grams

Vascu-Statt® II PLUS approximator with Gentle-Jaw™ surface
1001-583 Angled 45°, midi (yellow)
clamping pressure 75-80 grams



Vascu-Statt® II original approximator
1001-544 Straight, maxi (orange)
clamping pressure 165-175 grams

Vascu-Statt® II PLUS approximator with Gentle-Jaw™ surface
1001-584 Straight, maxi (orange)
clamping pressure 165-175 grams



Vascu-Statt® II original approximator
1001-545 Angled 45°, maxi (orange)
clamping pressure 165-175 grams

Vascu-Statt® II PLUS approximator with Gentle-Jaw™ surface
1001-585 Angled 45°, maxi (orange)
clamping pressure 165-175 grams